



OSU PARKING UTILIZATION STUDY

FALL TERM 2008

FACILITIES SERVICES
CAMPUS PLANNING

2008 OSU PARKING UTILIZATION STUDY

Table of Contents

Purpose.....3
 Study Findings.....3
 Methodologies.....3
 OSU Main Campus Parking Survey.....4
 Campus Population & Parking Capacity.....4
 Parking Utilization.....5
 Parking Demand (Permit Sales).....6
 Parking Utilization by Sector.....7
 Additional Information/Contacts.....8
 Attachments.....9

Index of Tables

Table 1: Summary of Parking Usage on Campus.....6
 Table 2: OSU Peak Time Parking Demand Ratios.....7
 Table 3: Summary of Parking Usage on Campus by Sector.....7

Index of Figures

Figure 1: OSU Population Breakdown.....4
 Figure 2: OSU Parking Capacity and Enrollment Trend.....5
 Figure 3: Summary of Parking Capacity.....6

2008 OSU PARKING UTILIZATION STUDY**PURPOSE**

The purpose of this study is for the University to analyze parking utilization on the OSU main campus (see map Attachment A - Parking Survey Overview Map). The main campus study is used to determine and analyze existing supply and demand as well as identifying parking trends on campus. OSU conducts a parking inventory during the fall term when enrollment is highest. As stated in the Campus Master Plan (CMP), vehicular parking improvements will be implemented if the campus occupancy rate reaches 90% (if utilization is 85% or greater planning for parking improvements will be initiated).

STUDY FINDINGS

Results of this study indicate that parking utilization on campus for 2008 is at 72%. Utilization has *decreased* by 3% over 2007 while the population of the campus *increased* by 2.5% (606 people) while parking capacity on campus remained relatively unchanged. Factors that may have influenced the change in utilization may include the higher cost of gasoline, the economy, elimination of free parking (verify), changes in CTS bus routes (driving through campus), better OSU shuttle routes and connections and increased environmental awareness.

OSU permits issued by Transit and Parking Services (TAPS) decreased by 719 (a permit decrease of 518 student (15%) & 201 Faculty/Staff (7%)) or 11% in total. The decrease in demand of parking permits may be attributable to reasons previously stated for the decrease in utilization. Compared with 2007 permits issued in conjunction with parking utilization show that the same percent of the student population (14%) is parking on campus while purchasing fewer permits. Faculty/Staff show to park less on campus (from 40% to 37%) in concert with less permits purchased.

METHODOLOGIES

The study was conducted during the fall academic term during the 4th week of the school (21-22 October, 2008 , from 10:00 AM to 12:00 PM). This time period is when the campus is considered at peak occupancy and is typical for reporting statistics for 4-year colleges and universities. The study was conducted over a 2-day period on a typical laboratory day (Tuesday) and typical lecture day (Wednesday) representing peak days within the week.

2008 OSU PARKING UTILIZATION STUDY

OSU MAIN CAMPUS PARKING SURVEY

An inventory of vacant parking spaces was completed one time on each day of the survey. The campus survey was completed by Campus Planning and TAPS.

CAMPUS POPULATION & PARKING CAPACITY

To effectively evaluate how OSU is planning existing and future parking needs, Figure 1 (OSU Population Breakdown) below shows the campus population trend. Over the past five years the total campus population has increased approximately 4.7% with the largest percent increase being between 2007 and 2008 which had an increase of 2.5%.

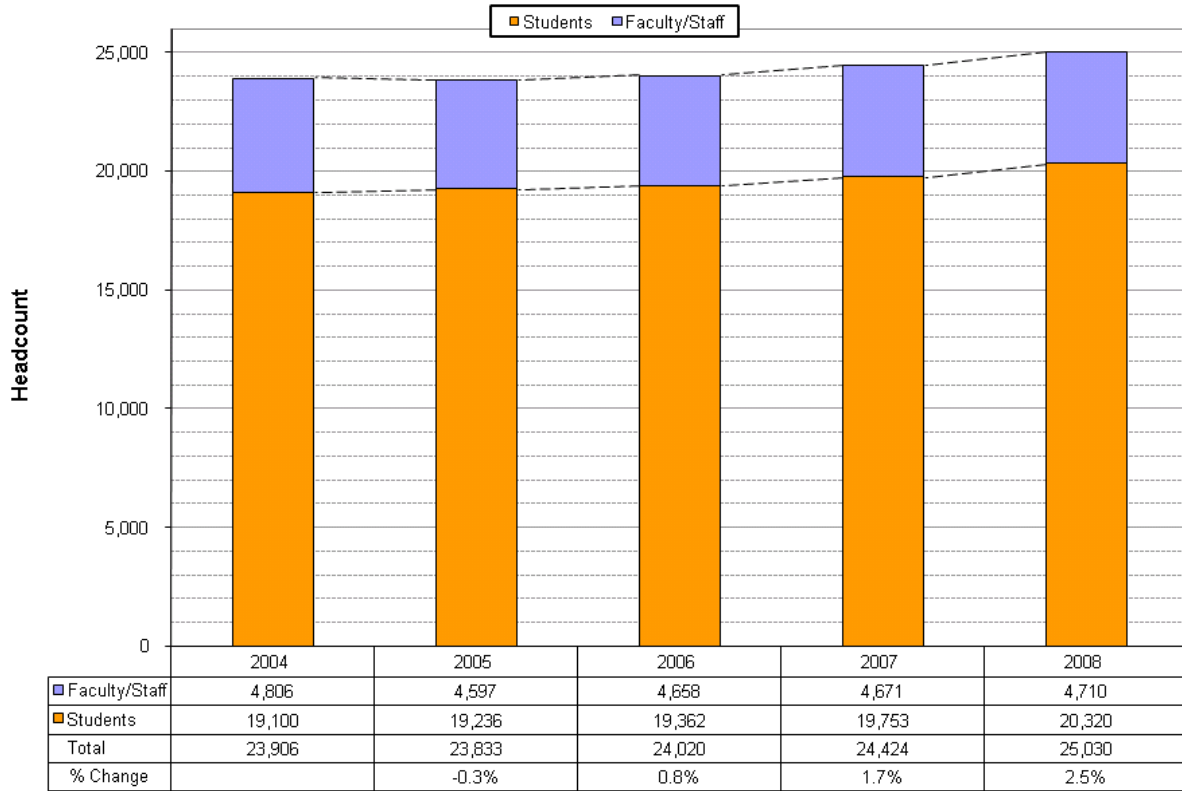


Figure 1: OSU Population Breakdown

Campus parking consists of a parking structure and a variety of parking lots: permit-regulated, metered, and open parking. On-street parking is available on 11th, 13th, 14th and 15th streets campus way west of 30th street and other roadways adjacent to the campus. The lots and on-street spaces on campus are mainly controlled by the OSU permit system except for one “open” parking lot that is free for anyone to use. The “open” lot is located on Campus way west of the Motor Pool parking lot. Parking lots are serviced by a free shuttle service which

2008 OSU PARKING UTILIZATION STUDY

consists of two buses that continually run on schedule throughout campus from 7:30 a.m. to 6:30 p.m and connect to the Corvallis Transit bus system.

OSU's parking management program employs a permit system for most of the parking lots, a pay-lot system for short-term metered parking, a campus shuttle and enforced parking. Permits are sold by use type: faculty/staff, student, emeritus, motorcycle, and visitor. Parking spaces within lots are assigned according to their permitted use. Those with faculty/staff permits are also allowed to use the student lots. Special permits are available for service vehicles and visitors on campus.

Figure 2 (OSU Parking Capacity and Enrollment Trend) shows the breakdown of assigned parking spaces relative to campus population. Overall parking spaces remain approximately the same at just over 8,000 spaces from 2007 to 2008. The slight change of 49 spaces was due to reconfiguration of parking lots and some spaces being eliminated due to safety concerns. The relative distribution of parking capacity by campus sector can be viewed in Attachment B - Parking Capacity by Campus Sector Map.



Figure 2: OSU Parking Capacity and Enrollment Trend

PARKING UTILIZATION

Parking utilization is calculated as the ratio of occupied spaces to the total number of spaces. A 90% utilization rate requires the University to construct new parking facilities. At this level of utilization drivers may spend considerable time circulating campus in search of a parking space. **Based on the survey, OSU's parking is at a utilization rate of 72% during peak hours.** A detailed map

2008 OSU PARKING UTILIZATION STUDY

showing parking lot utilization by parking lot and campus sector is included as Attachment C - Campus Survey Results Map.

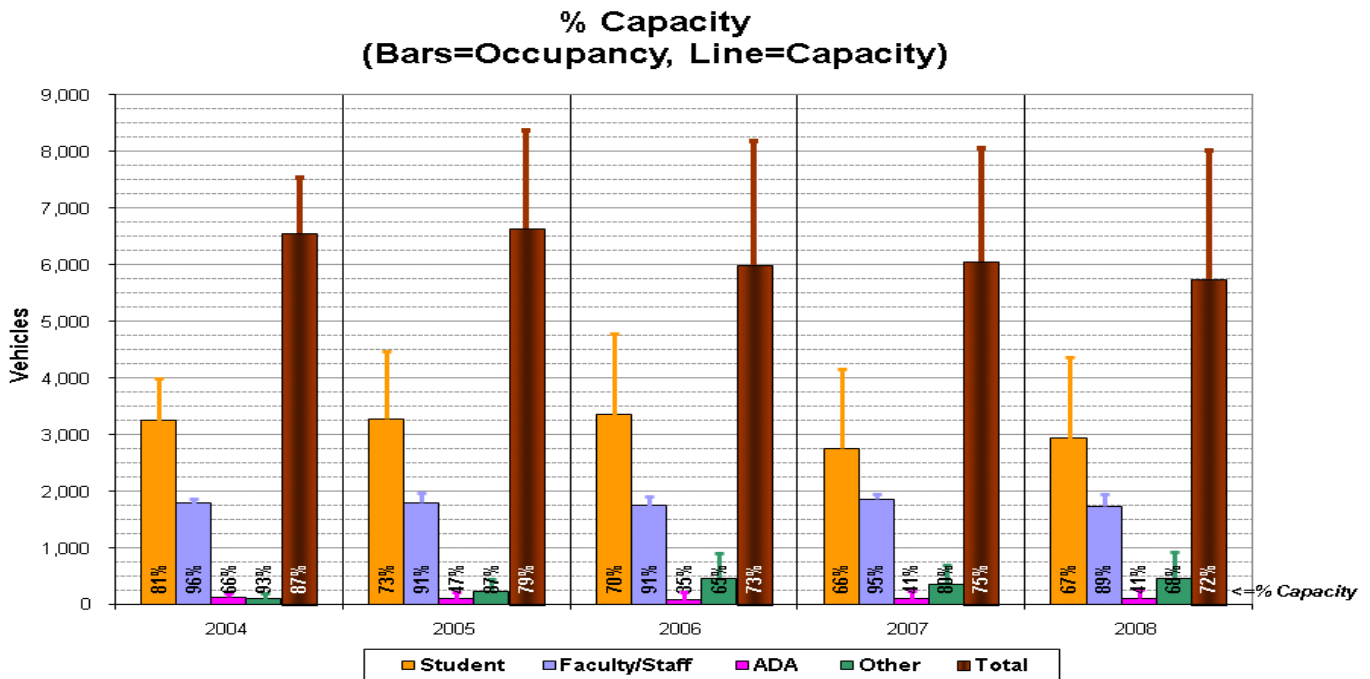


Figure 3: Summary of Parking Capacity

	Parking Capacity (vehicles)					Parking Occupancy (vehicles)					% Occupancy				
	2004	2005	2006	2007	2008	2004	2005	2006	2007	2008	2004	2005	2006	2007	2008
Students	3,984	4,481	4,780	4,161	4,368	3,241	3,276	3,344	2,753	2,928	81%	73%	70%	66%	67%
Faculty/Staff	1,860	1,976	1,907	1,950	1,954	1,788	1,797	1,740	1,859	1,732	96%	91%	91%	95%	89%
ADA	191	217	211	248	254	126	102	73	101	105	66%	47%	35%	41%	41%
Other	1,493	1,697	1,294	1,696	1,430	1,394	1,469	839	1,351	971	93%	87%	65%	80%	68%
Total	7,528	8,371	8,192	8,055	8,006	6,549	6,644	5,996	6,064	5,735	87%	79%	73%	75%	72%

Table 1: Summary of Parking Usage on Campus

Parking Occupancy between 2007 and 2008 has decreased by 3% from 75% to 72%. Figure 3 (Summary of Parking Capacity) and Table 1 (Summary of Parking Usage on Campus) show a comparison of parking utilization over the last five years. The decrease may be the result of many factors but can be mainly attributed to the price of gasoline, the economy and increased environmental awareness. Other factors that may have influenced the change in utilization may include changes in CTS bus routes (driving through campus), better OSU shuttle routes and connections, elimination of free parking and an increase in on-campus housing occupancy (from 90% to 92% from fall of 2007 to 2008 (increase in 84 individuals residing on campus)).

PARKING DEMAND (PERMIT SALES)

Parking demand is defined by parking lot utilization or by the sale of campus parking permits (from September 1st through October 8th). OSU uses parking demand ratios to project future demand in conjunction with parking lot utilization. The parking demand ratio is calculated by either the ratio of permitted vehicles to

2008 OSU PARKING UTILIZATION STUDY

campus population or the ratio of vehicles parked to campus population. Table 2 (OSU Peak Time Parking Demand Ratios) below shows the total number of parking permits by two categories: 1) faculty/staff; and 2) student.

Parking Demand Ratios	Fall 2007				Fall 2008			
	Headcount	Parking Occupancy per Headcount	Permits	Parking Occupancy per Permit	Headcount	Parking Occupancy per Headcount	Permits	Parking Occupancy per Permit
Student	19,753	14%	3,513	78%	20,320	14%	2,995	98%
Faculty/Staff	4,671	40%	2,845	65%	4,710	37%	2,644	65%
Total	24,424	19%	6,358	73%	25,030	19%	5,639	83%

Table 2: OSU Peak Time Parking Demand Ratios

The data in Table 2 indicates that 19% (14% Student, 37% Faculty/Staff) of the campus population parks on campus during peak time. During this same time 83% (98% Student, 65% Faculty/Staff) of those purchasing permits use them. Compared to 2007, the number of permits has decreased by 719 permits (decrease of 518 Students & 201 Faculty/Staff) or 11%. The apparent decrease in demand of parking permits may be due to reasons similar to the decrease in on campus parking utilization (mainly gasoline prices, the economy & environmental awareness).

PARKING UTILIZATION BY SECTOR

Sector	Parking Capacity (vehicles)			Parking Occupancy (vehicles)			% Occupancy		
	2006	2007	2008	2006	2007	2008	2006	2007	2008
A	130	130	130	111	122	84	85%	94%	64%
B	924	948	948	722	787	761	78%	83%	80%
C	2,653	2,637	2,606	2,406	2,460	2,285	91%	93%	88%
D	1,268	1,265	1,265	1,141	1,169	1,058	90%	92%	84%
E	295	253	253	251	192	195	85%	76%	77%
F	1,514	1,416	1,394	524	448	447	35%	32%	32%
G	1,365	1,361	1,364	805	883	906	59%	65%	66%
H	43	46	46	37	5	1	86%	11%	2%
J	0	0	0	0	0	0	n/a	n/a	n/a
Total	8,192	8,056	8,006	5,997	6,066	5,735	73%	75%	72%

Table 3: Summary of Parking Usage on Campus by Sector

The OSU Campus Master Plan divides the campus into nine sectors, each with its own development allocation, including parking. Table 3 (Summary of Parking Usage on Campus by Sector) shows parking demand and utilization by campus sector. Attachment B - Parking Capacity by Campus Sector Map shows a map depicting relative sector parking capacity by sector. Attachment C - Campus Survey Results Map shows a map depicting sector utilization as well as individual parking lot utilization.

On a sector by sector basis (excluding sector J that has no parking) Sectors F and H maintain less than 50% of utilized capacity. Sector F's lack of utilization (32%) is mainly attributable to the Reser Stadium parking lot being underutilized (14% on average). Sector H shows underutilization (2%) less than 50% but

2008 OSU PARKING UTILIZATION STUDY

does not hold a significant amount of parking capacity (46 spaces), is only used for athletic events and is not patrolled by TAPS. Sector G's lack of utilization (66%) is mainly attributable to the underutilization of the parking structure (59% on average).

ADDITIONAL INFORMATION/CONTACTS

For additional information and or questions concerning this report contact the following.

- Robert Monasky, Land Use Analyst,
541-737-0456, Robert.Monasky@OregonState.edu
- Patty McIntosh, Campus Planning Manager
541-737-0917, Patty.McIntosh@OregonState.edu

2008 OSU PARKING UTILIZATION STUDY

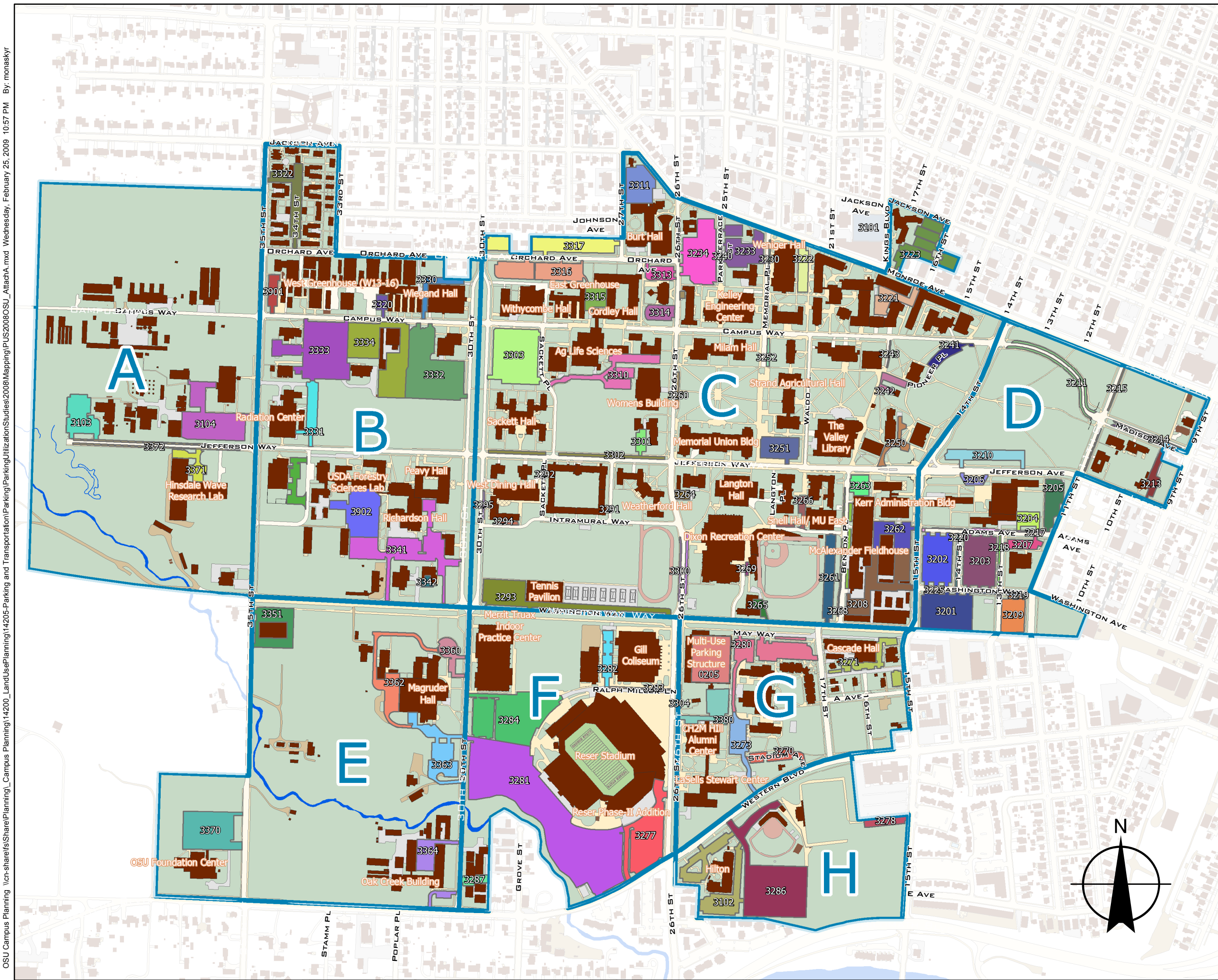
ATTACHMENTS

- Attachment A - Parking Survey Overview Map
- Attachment B - Parking Capacity by Campus Sector Map
- Attachment C - Campus Survey Results Map

2008 Parking Utilization Study

Parking Survey Overview

Note
Parking lots shown
multicolor for diferentiation
purposes

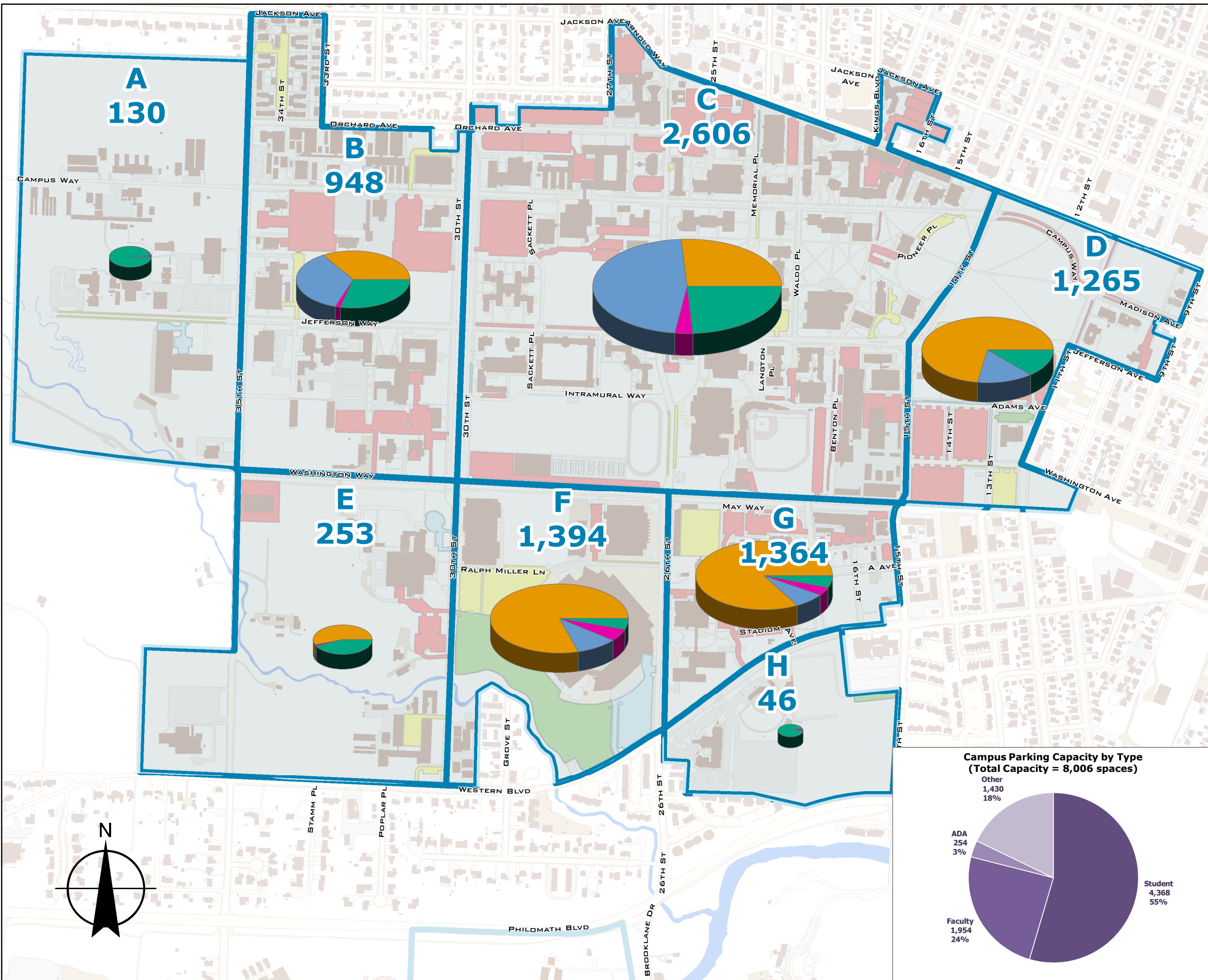


 Campus Sector

OSU Campus Planning \ncr-share\share\Planning\14200_LandUse\Planning\14205-Parking and Transportation\ParkingUtilizationStudies\2008\Mapping\PUS2008OSU_AttachA.mxd February 25, 2009 10:57 PM By: monasky

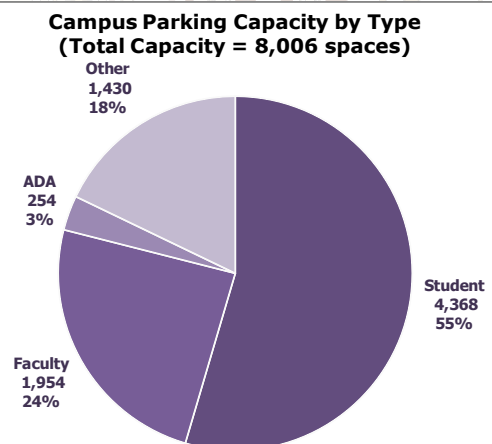
2008 Parking Utilization Study

Parking Capacity by Campus Sector



Vehicle Capacity*

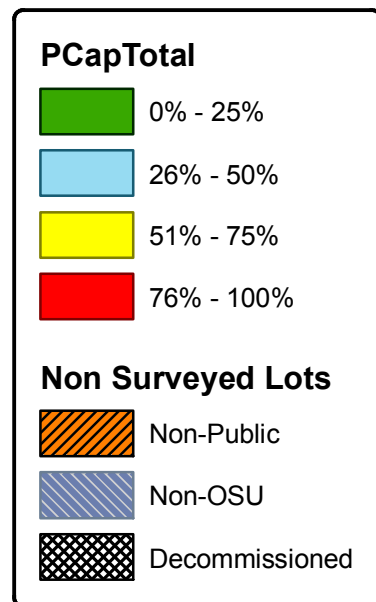
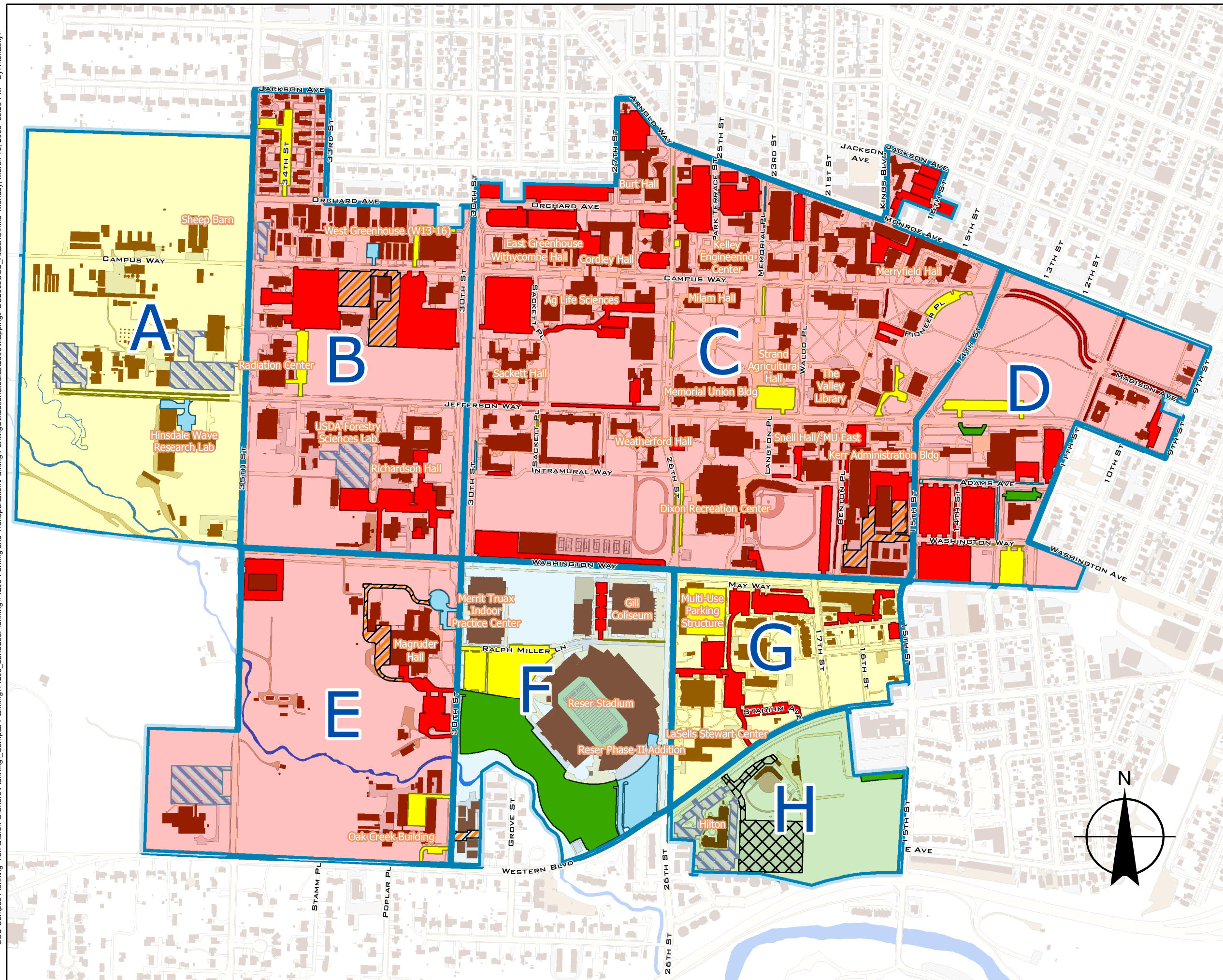
- CapStudent
- CapFaculty
- CapADA
- CapOther



*Number represents total parking spaces for sector.

2008 Parking Utilization Study

Campus Survey Results



*Sector shading indicates % utilization

OSU Campus Planning \n-on-share\F\Share\Planning\14200_LandUse\Planning\14205-Parking and Transportation\ParkingUtilizationStudies\2008Mapping\PUS2008OSU_AttachC.mxd Monday, March 16, 2009 03:23 PM By: monaskyr